

**KEYNOTES:**

- 1 EXTRUDED CONCRETE CURB. SEE DETAIL
- 2 CURB BREAK & END TAPER, SEE DETAIL AND CC-16464
- 3 CONCRETE SIDEWALK W/INTEGRAL 6" CURB
- 4 REMOVE AND REPLACE EXISTING SIDEWALK FOR INSTALLATION OF PROPOSED WATERLINES, REMOVAL AND REPLACEMENT SHALL BE FROM JOINT TO JOINT.
- 5 CURB RAMP PER COC 2319, TYPE C W/ DETECTABLE WARNING DEVICE WHERE SHOWN.
- 6 EX. CURB RAMP
- 7 BUMPER BLOCKS (TYPICAL), SEE DETAIL
- 8 STOP SIGN (R1-1), SEE POST DETAIL
- 9 18" STOP BAR, WHITE, THERMOPLASTIC
- 10 ISLAND/STRIPED WALKWAY, 4" PAINTED WHITE
- 11 PARKING SPACE STRIPING, 4" PAINTED WHITE
- 12 HANDICAP PAVEMENT SYMBOL, AS REQUIRED BY ADA REGULATIONS
- 13 HANDICAP PARKING SIGN, AS REQUIRED BY ADA REGULATIONS
- 14 PR. STORM STRUCTURE WITH CONCRETE COLLAR, SEE STORMWATER PLAN AND DETAIL.
- 15 UNDERGROUND DETENTION AREA, SEE STORMWATER PLAN
- 16 PR. FIRE HYDRANT, SEE WATER SERVICE/UTILITY PLAN
- 17 EX. FIRE HYDRANT, SEE WATER SERVICE/UTILITY PLAN
- 18 FIRE DEPARTMENT CONNECTION, SEE MEP PLAN
- 19 SANITARY CLEANOUT, SEE UTILITY PLAN

- 20 SANITARY GREASE TRAP, SEE MEP PLAN
- 21 PR. GAS METER, SEE MEP PLAN
- 22 PAD MOUNTED TRANSFORMER WITH CONCRETE FILLED STEEL PIPE BOLLARDS (SIZE, LOCATION, & NO. OF BOLLARDS PER POWER COMPANY REQUIREMENTS), APPROXIMATE LOCATION. SEE MEP PLAN
- 23 LANDSCAPE AREA, SEE LANDSCAPE PLAN
- 24 BIKE RACK, SEE LANDSCAPING PLAN
- 25 DUMPSTER W/ ENCLOSURE, SEE ARCHITECTURAL PLAN
- 26 FLUSH STRAIGHT CURB. SEE DETAIL
- 27 REMOVE EXISTING CONCRETE CURB AND SAW CUT EXISTING PAVEMENT TO A SMOOTH EDGE. SEAL JOINT FOLLOWING INSTALLATION OF NEW PAVEMENT PER ITEM 409
- 28 REMOVE EXISTING CONCRETE CURB DURING CONSTRUCTION OPERATIONS. REPLACE WITH EXTRUDED CONCRETE CURB PER DETAIL
- 29 BOLLARDS (TYP.) - SEE ARCHITECTURAL PLAN
- 30 PR. LIGHT POLES - SEE SITE UTILITY PLAN
- 31 CONCRETE STOOPS AND RAMPS SHOWN FOR REFERENCE ONLY. SEE ARCHITECTURAL PLANS FOR FINAL DIMENSIONS, COMPOSITION, AND RAILING DETAILS
- 32 REMOVE EXISTING PAVEMENT AND INSTALL 8" CONCRETE PAVEMENT FOR THE DIMENSIONS SHOWN. MATCH EXISTING PAVEMENT ELEVATIONS AND PAINT SURFACE TO MATCH COLOR OF EXISTING PAVEMENT
- 33 EXISTING CURB AND PAVEMENT SHALL BE SAWCUT, REMOVED AND DISPOSED OF FOR THE DIMENSIONS SHOWN. REPLACE CURB WITH SIMILAR CURB. REPLACE PAVEMENT PER COC STD. DWG. 1441, TYPE 1
- 34 METER PIT. SEE WATER SERVICE AND UTILITIES PLANS.

**GENERAL NOTES:**

ALL DIMENSIONS SHOWN ARE TO THE FACE OF CURB.  
 RADII ON ALL CURBS IS 5.0' FOOT UNLESS NOTED OTHERWISE.  
 ALL RADII INDICATED SHALL BE FORMED AS CIRCULAR ARCS.  
 THE CONTRACTOR SHALL VERIFY ALL DIMENSIONS IN THE FIELD BEFORE STARTING CONSTRUCTION. THE CONTRACTOR SHALL BE RESPONSIBLE FOR ALL FIELD DIMENSIONS. IF ANY DISCREPANCIES ARE FOUND IN THESE PLANS FROM THE ACTUAL FIELD CONDITION, THE CONTRACTOR SHALL NOTIFY THE OWNER OR THE OWNERS REPRESENTATIVE IMMEDIATELY.

ALL DIMENSIONS ARE PARALLEL AND PERPENDICULAR TO BASELINES, PROPERTY LINES, OR BUILDING LINES UNLESS OTHERWISE NOTED.  
 PROVIDE A SMOOTH TRANSITION TO NEW IMPROVEMENTS FROM EXISTING AREAS.

HANDICAP RAMP, STRIPING, AND SIGNAGE SHALL BE IN ACCORDANCE WITH FEDERAL, STATE, COUNTY, CITY, AND LOCAL CODES.

THE CONTRACTOR IS REFERRED TO THE JULY 9, 2013 GEOTECHNICAL ENGINEERING REPORT AND THE JULY 10, 2013 UNDERGROUND DETENTION AREA LETTER, PREPARED BY GEOTECHNICAL CONSULTANTS INC. FOR SITE PREPARATION AND EARTHWORK GUIDELINES, BUILDING PAD OPTIONS, AND PAVEMENT/UNDERGROUND DETENTION SUBGRADE PREPARATION RECOMMENDATIONS.

**BID NOTES FOR PATIO AREA**

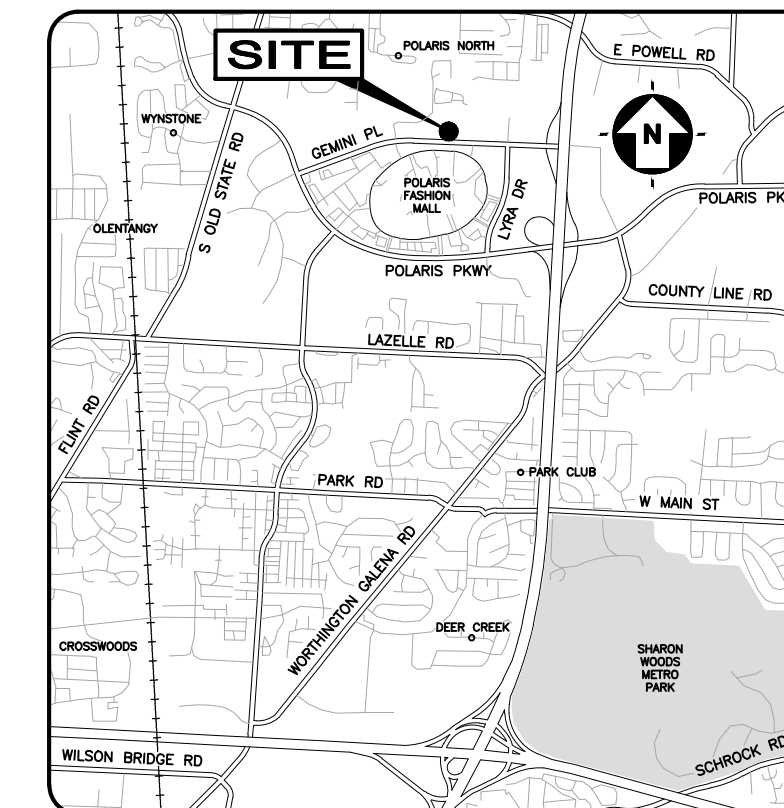
BASE BID FOR PATIO AREA SHALL CONSIST OF GRADING THE COMPACTED SUBGRADE TO AN ELEVATION 6 INCHES BELOW FINISH GRADE. ALTERNATE BID SHALL CONSIST OF PREPARING THE SUBGRADE AND INSTALLING A 4-INCH CONCRETE PAD PER OWNERS SPECIFICATIONS. EARTHWORK ADDITION OR DEDUCT FOR PAD AND SUB-PAD THICKNESSES SHALL BE INCLUDED IN THE ALTERNATE BID.

**SITE LEGEND:**

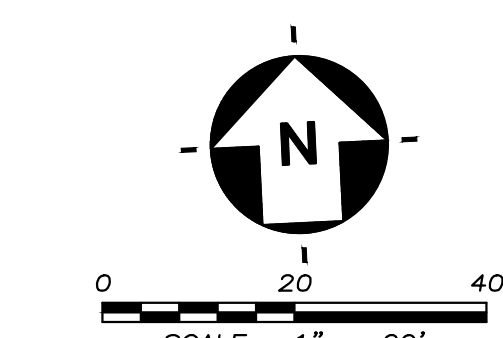
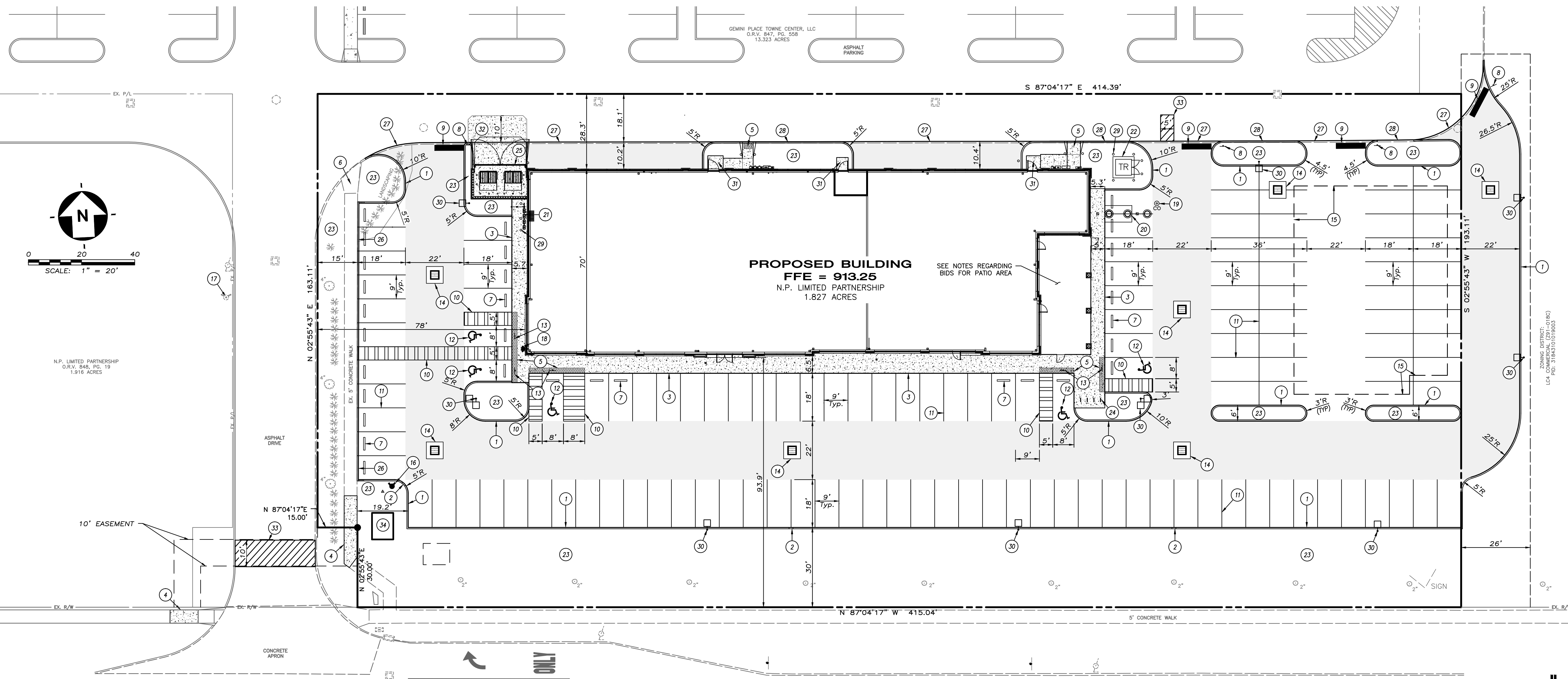
- [Pattern] = CONCRETE PAVEMENT
- [Pattern] = HEAVY DUTY PAVEMENT
- [Pattern] = NORMAL DUTY ASPHALT

**MAINTENANCE OF TRAFFIC**

1. PAVEMENT CUT AND REMOVAL, UTILITY INSTALLATION, AND PAVEMENT REPLACEMENT SHALL OCCUR ON THE SAME DAY, EXCLUDING WEEKENDS OR HOLIDAYS.
2. CONTRACTOR SHALL MAINTAIN ONE-LANE, TWO-WAY TRAFFIC, OR PROVIDE DETOUR ROUTE(S) AND SIGNAGE ACCEPTABLE TO THE OWNER.
3. ANY LANES OPEN TO TRAFFIC SHALL BE SECURELY PLATED AT ALL TIMES.



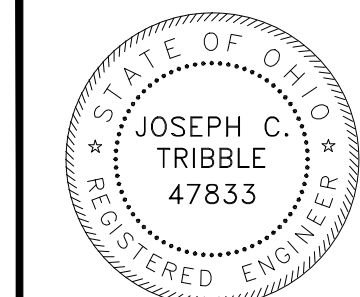
VICINITY MAP  
NTS



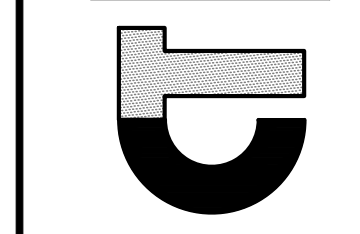
**GEMINI PLACE (ORD. NO. 1867-2004)**  
 (FORMERLY FASHION MALL PARKWAY)  
 P.C. 2, SLIDE 670



1-800-362-2764  
 CALL TWO WORKING DAYS BEFORE YOU DIG  
 (NON MEMBERS MUST BE CALLED DIRECTLY)



**CT Consultants**  
 engineers | architects | planners  
 Northwoods I Building - 7965 N. High Street - Suite 340, Columbus, Ohio 43235  
 Phone: 614-885-1700 - Fax: 614-885-1701 - www.ctconsultants.com



NO.	DATE	REVISION

PROJECT NO: 13231  
 SCALE: 1" = 20'  
 DATE: 8/8/13  
 DESIGN: MAD  
 DRAWN: BTW  
 CHECK: BJU

**GEMINI PLACE TOWNE CENTER  
 OUTLOT III  
 NP LIMITED PARTNERSHIP  
 SITE PLAN**

SHEET NO.  
**7/10**  
 BID SET 08-05-2013

H:\2013\13231-GEMINI-OUTLOT-III\DWGSET\PLAN\CC-STORMWA-132315007.DWG - 8/6/2013 8:41:58 AM